

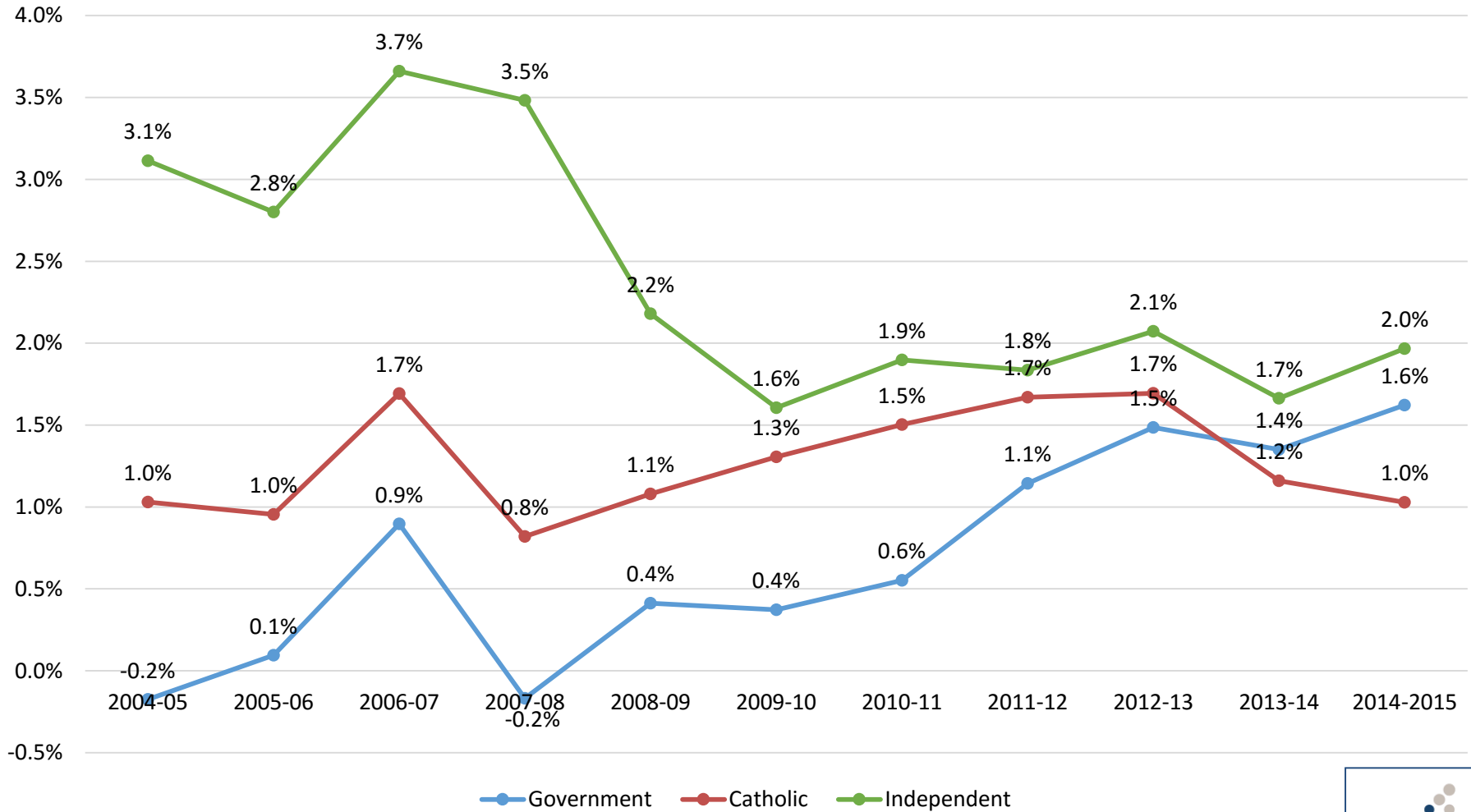
2016 AHISA & ISCA National Education Forum

Colette Colman
Executive Director
Independent Schools Council of Australia

15 March 2016



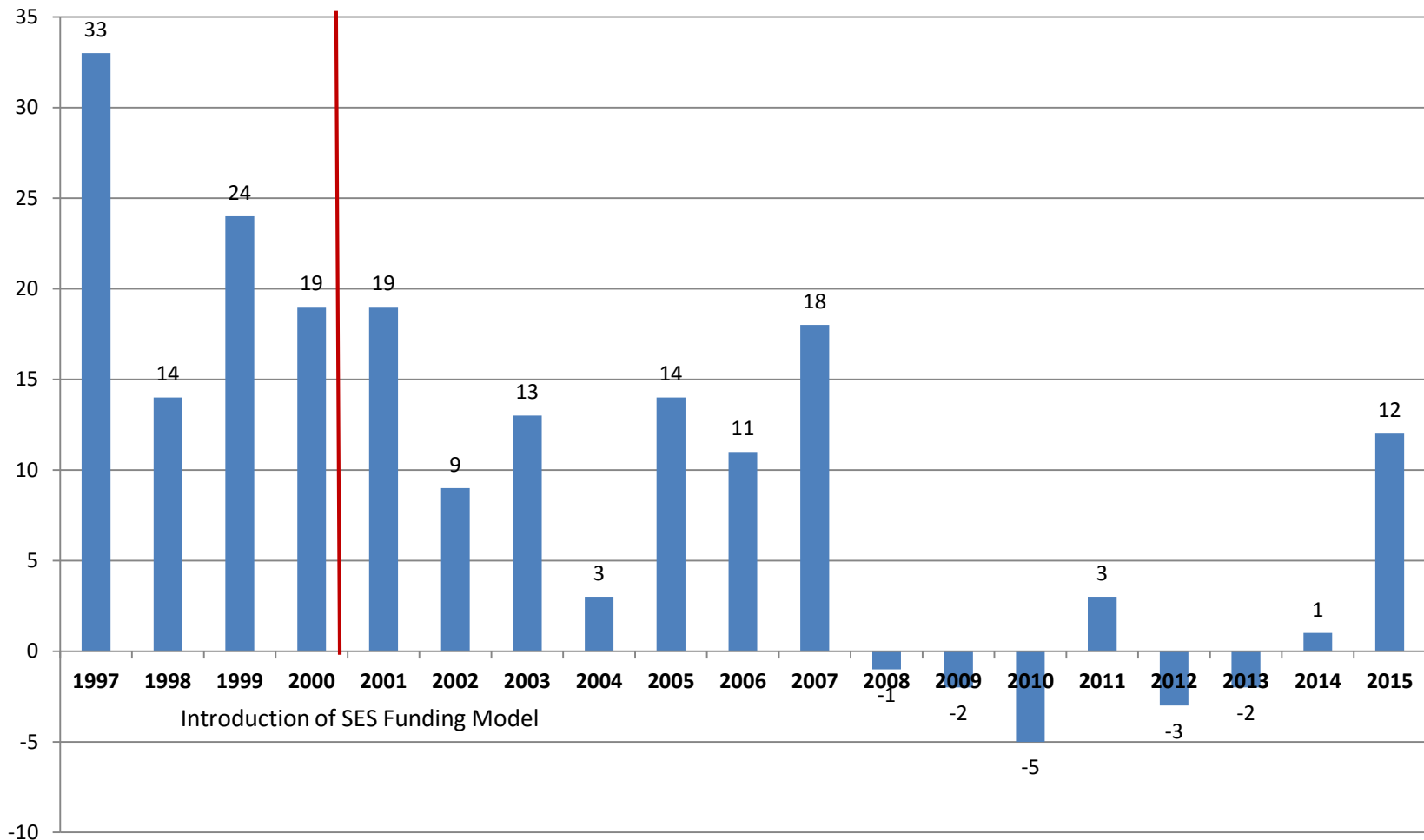
Enrolment growth by sector 2004-2015



Source: ABS *Schools Australia* 2014 (FT student enrolments)



Change in number of Independent schools 1997-2015



Source: ABS *Schools Australia 2015*

Note: Figures exclude Independent Catholic schools

Average size of Independent schools 1980-2015

	No. schools	FT enrolments	Average school size
1980	529	144,270	273
1990	803	252,611	315
2000	938	357,507	381
2010	1,017	491,233	483
2015	1,028	539,377	525

Source: ABS *Schools Australia* (FT student enrolments; Schools data); 2023 figures based on Dept of Education & Training enrolment predictions, and assumes number of schools remains stable

Note: Figures exclude Independent Catholic schools

Projected enrolment change in all schools 2014–2025

	2014	2025**	Change (no.)	Equivalent number of new schools*
Government Schools				
Primary	1,493,279	1,637,834	144,555	403
Secondary	894,250	1,112,599	218,349	608
Total	2,387,529	2,750,433	362,904	1,011
Catholic Schools				
Primary	414,040	437,037	22,997	52
Secondary	343,226	404,810	61,584	140
Total	757,266	841,847	84,581	192
Independent Schools				
Primary	255,619	277,281	21,662	42
Secondary	273,351	360,020	86,669	166
Total	528,970	637,301	108,331	208
All Schools				
Primary	2,162,938	2,352,152	189,214	484
Secondary	1,510,827	1,877,429	366,602	937
Total	3,673,765	4,229,581	555,816	1,420

Source: Department of Education & Training Projections and ABS *Schools Australia* 2014 (FT student enrolments)

*Based on average school size by sector for 2014 derived from ABS schools data (2015 data is unavailable)

** Note: Projections beyond 2015 impacted by shift of Yr 7 from Primary to Secondary in WA & QLD

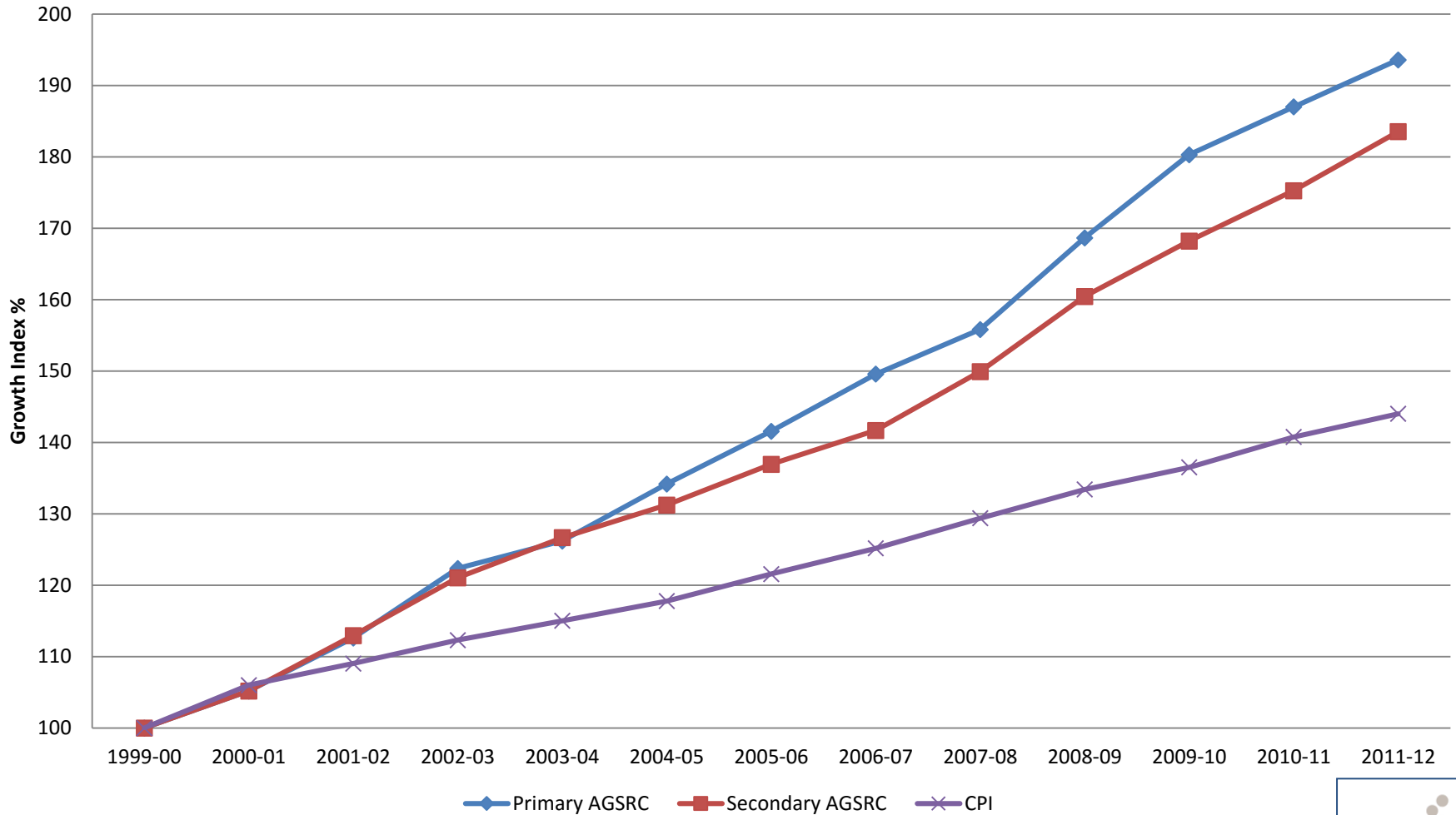
Overview of growth in Independent schools 2005 to 2015

	2005	2015	Growth in numbers
Schools	995	1,031	36
Students	399,765	483,646	83,881
Campuses	177	264	87
Students	35,220	56,967	21,747
Total Schools and campuses	1,172	1,295	123
Total Students	434,985	540,613	105,628

Source: Department of Education and Training Census 2005 and 2015

Note: Figures exclude Independent Catholic schools

AGSRC and CPI 1999/00-2011/12



Source: ABS 2013 & Department of Education and Training 2014