

2012 ISCA & AHISA National Education Forum

**ISCA / AHISA Information Session
Bill Daniels**

Canberra

20 August 2012

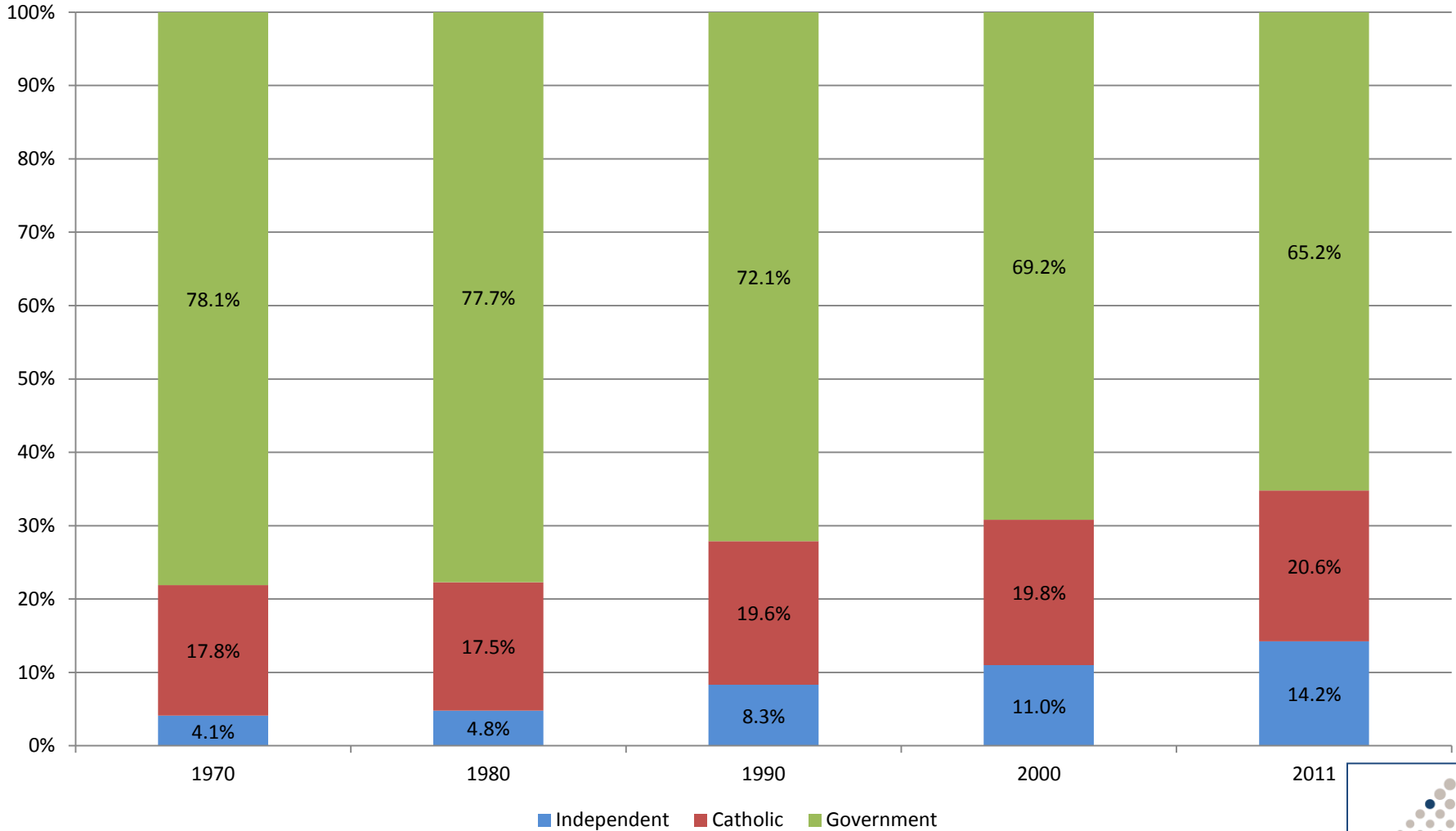
Australian school enrolments 2011

	Students			Enrolment Share		
	Primary	Secondary	Total	Primary	Secondary	Total
Independent*	237,466	263,092	500,558	11.7%	17.7%	14.2%
Catholic	396,259	327,757	724,016	19.5%	22.1%	20.6%
Government	1,403,429	891,556	2,294,985	68.9%	60.1%	65.2%
TOTAL	2,037,154	1,482,405	3,519,559	100.0%	100.0%	100.0%

Source: ABS *Schools Australia* 2011 (FT enrolments)

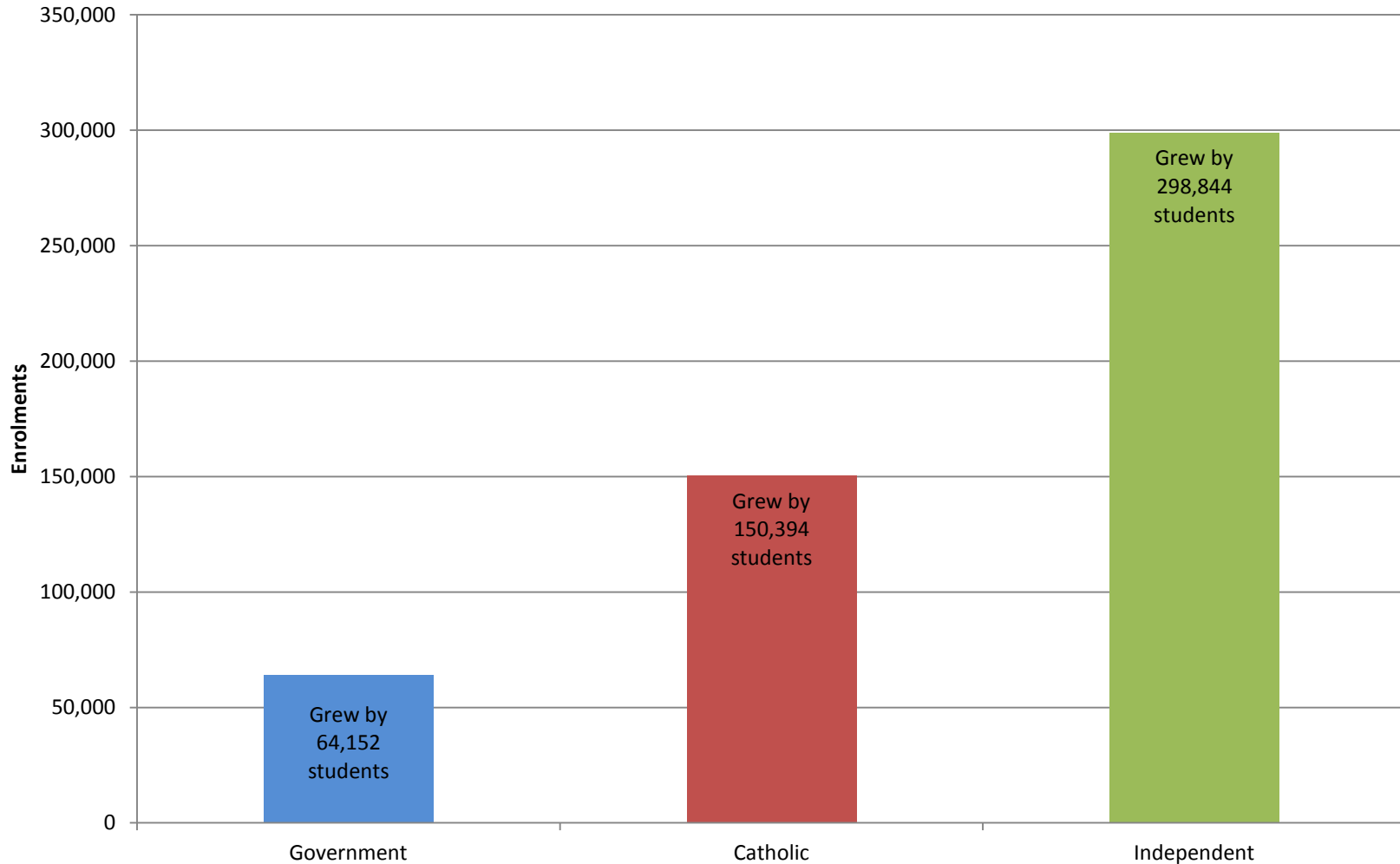
* When including independent Catholic schools enrolments are close to 553,000.

Enrolment share by sector 1970 to 2011



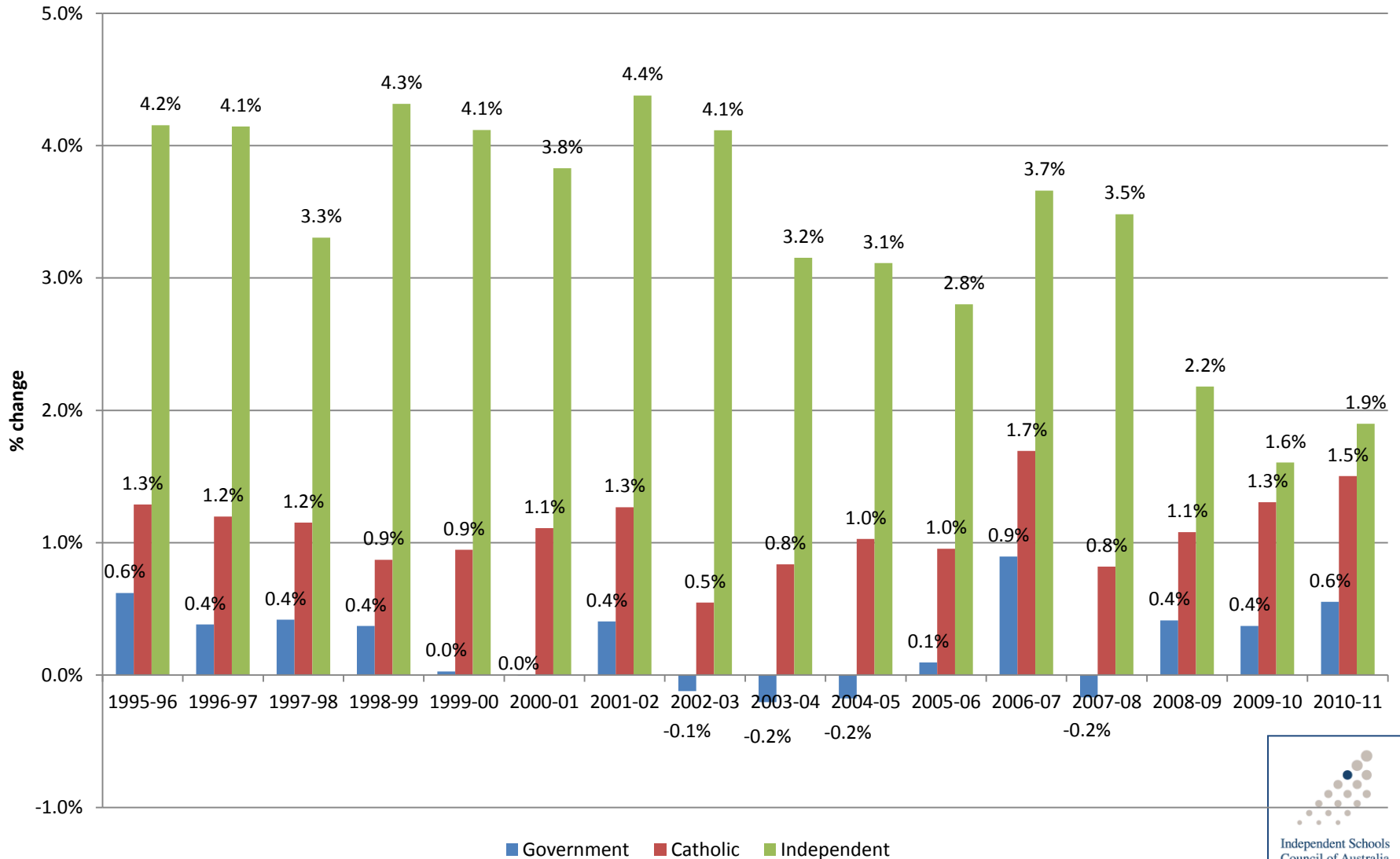
Source: ABS *Schools Australia* FT data

Enrolment change by sector 1985 - 2011



Source: ABS *Schools Australia* FT data

Enrolment growth by sector 1995 - 2011



Source: ABS *Schools Australia* FT data



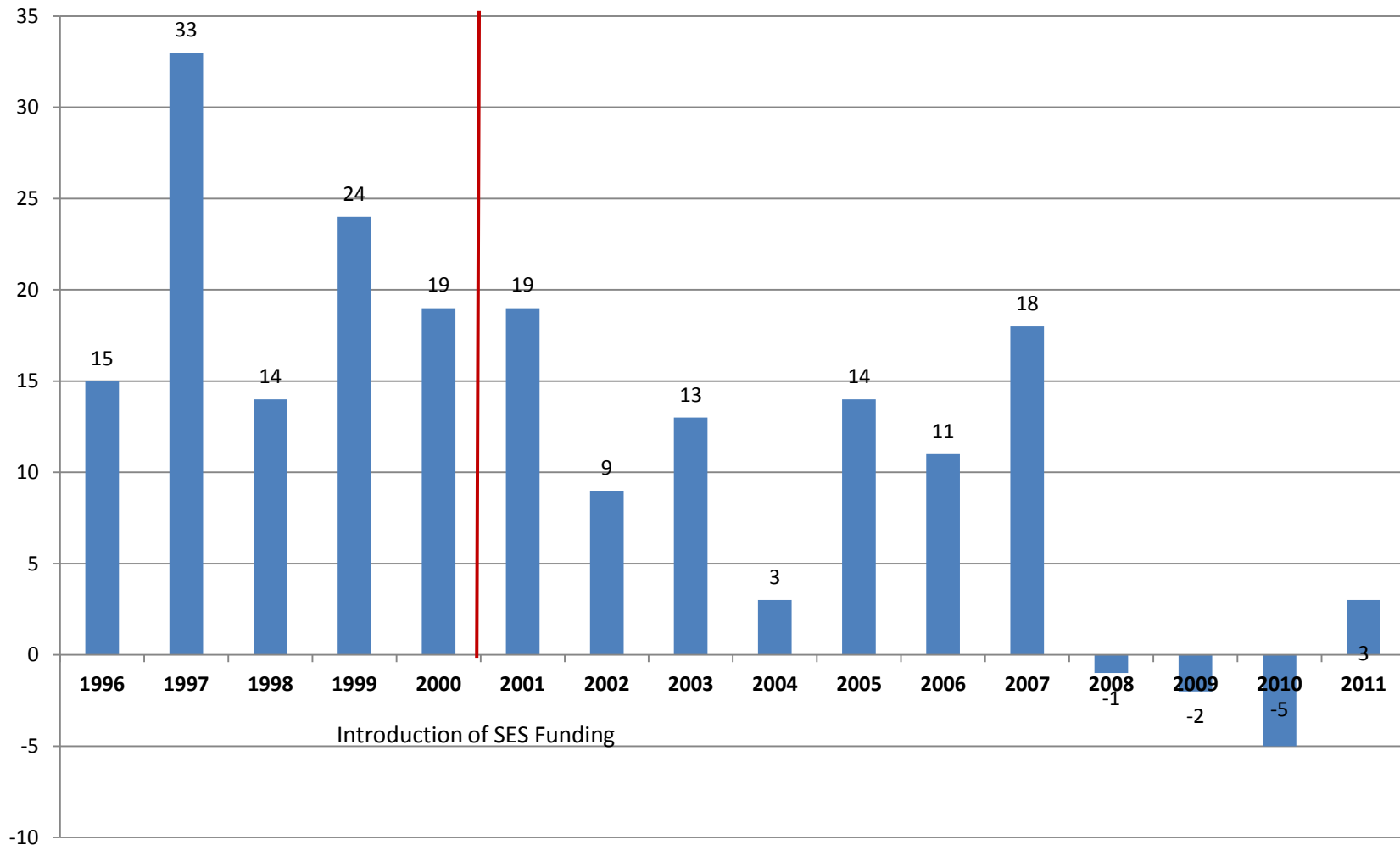
Size of Jurisdiction/Sector by Enrolments 2011*

Jurisdiction/Sector	Enrolments
NSW Govt	745,540
Catholic systemic	672,975
Independent	552,763
VIC Govt	541,212
QLD Govt	491,780
WA Govt	237,118
SA Govt	165,899
TAS Govt	58,451
ACT Govt	34,643
NT Govt	29,165

Source: ABS *Schools Australia* 2011 and DEEWR Non-government Schools Census data

*Independent Catholic enrolments have been allocated to the independent sector

Change in number of independent schools over previous year 1996 - 2011



Source: ABS Schools Australia

Average size of independent schools 1980 - 2011

	No. schools	FT enrolments	Average school size
1980	529	144,270	273
1990	803	252,611	315
2000	938	357,507	381
2011	1,020	500,558	491

Projected enrolment change in all schools 2011 - 2020

	2011	2020	Change (no.)	Equivalent number of new schools*
Government Schools				
Primary	1,403,429	1,747,547	344,118	1,005
Secondary	891,556	910,518	18,962	55
Total	2,294,985	2,658,066	363,081	1,061
Catholic Schools				
Primary	396,259	496,585	100,326	237
Secondary	327,757	375,200	47,443	112
Total	724,016	871,786	147,770	349
Independent Schools				
Primary	237,466	313,630	76,164	155
Secondary	263,092	344,285	81,193	165
Total	500,558	657,914	157,356	321
All Schools				
Primary	2,037,154	2,557,762	520,608	1,398
Secondary	1,482,405	1,630,003	147,598	333
Total	3,519,559	4,187,766	668,207	1,730

Source: DEEWR Projections and ABS *Schools Australia*

*Based on average school size by sector for 2011 derived from ABS data.

Sector diversity

Indigenous students	9,518
Independent schools with 50%+ indigenous enrolment	36
Students with disabilities	13,148
Special schools	65
Overseas students	7,331
Boarding students	16,511
Boarding schools	149
Schools with less than 200 students	38%
Schools with 200 – 999 students	44%
Schools with 1,000 – 2,000 students	16%
Combined schools (primary & secondary)	64%

Note: Figures include independent Catholic schools and enrolments

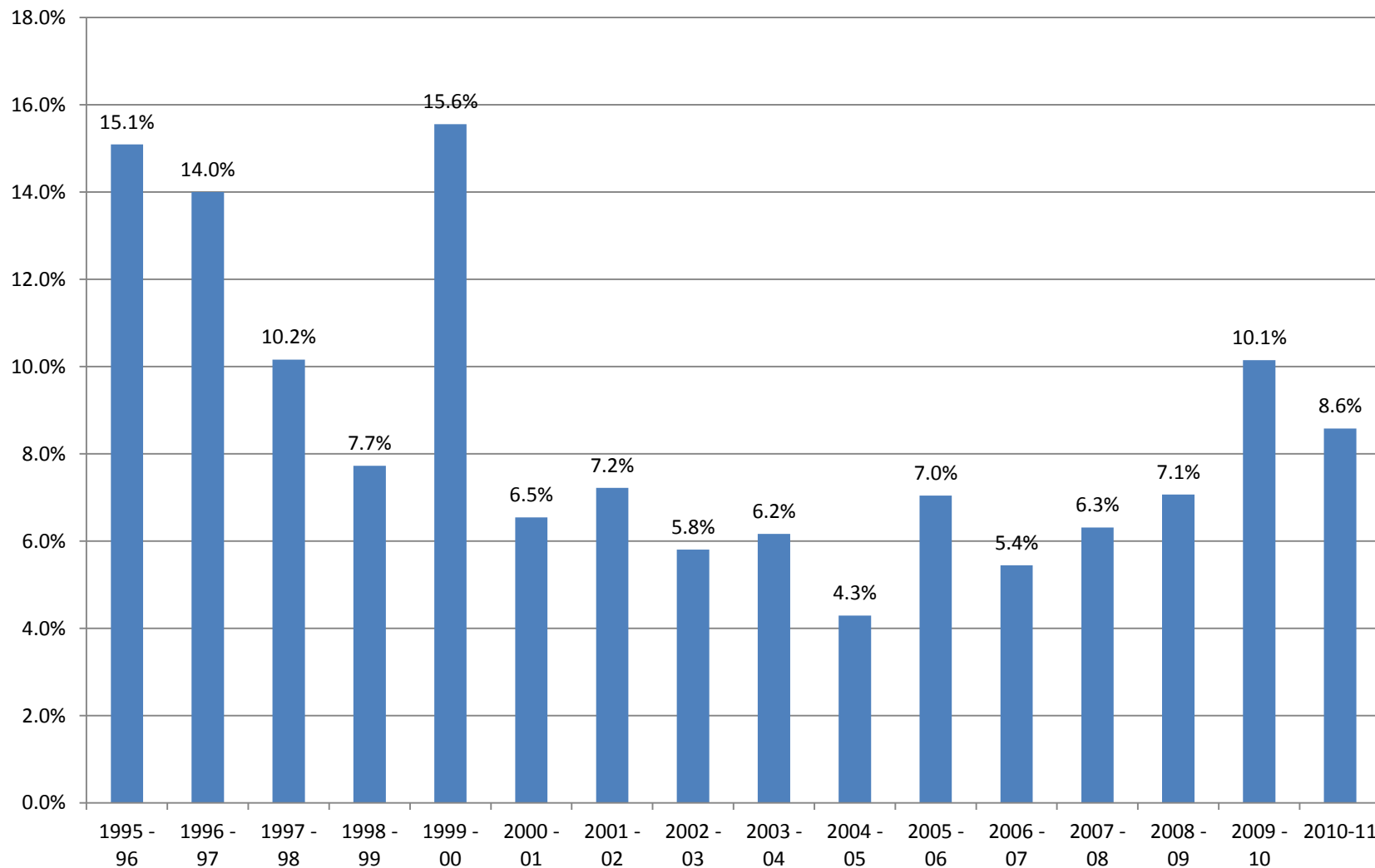
Independent school affiliations 2011

Affiliation	Schools	Student FTE	%
Anglican	151	139,915	25.3%
Non-Denominational	187	72,325	13.1%
Christian Schools	134	55,731	10.1%
Uniting Church in Australia	44	50,344	9.1%
Catholic	59	47,903	8.7%
Lutheran	86	37,410	6.8%
Islamic	33	21,576	3.9%
Baptist	43	18,647	3.4%
Inter-Denominational	27	16,592	3.0%
Seventh Day Adventist	48	11,147	2.0%
Presbyterian	14	9,961	1.8%
Jewish	19	8,899	1.6%
Steiner School	43	7,687	1.4%
Pentecostal	17	7,465	1.4%
Assemblies of God	11	5,635	1.0%
Brethren	8	4,514	0.8%
Greek Orthodox	8	3,760	0.7%
Montessori School	39	4,098	0.7%
Other Catholic	7	3,441	0.6%
Other Orthodox	6	2,092	0.4%
Other Religious Affiliation*	12	5,238	0.9%
Other**	90	18,381	3.3%

*Other Religious includes Churches of Christ, Ananda Marga, Hare Krishna and Society of Friends

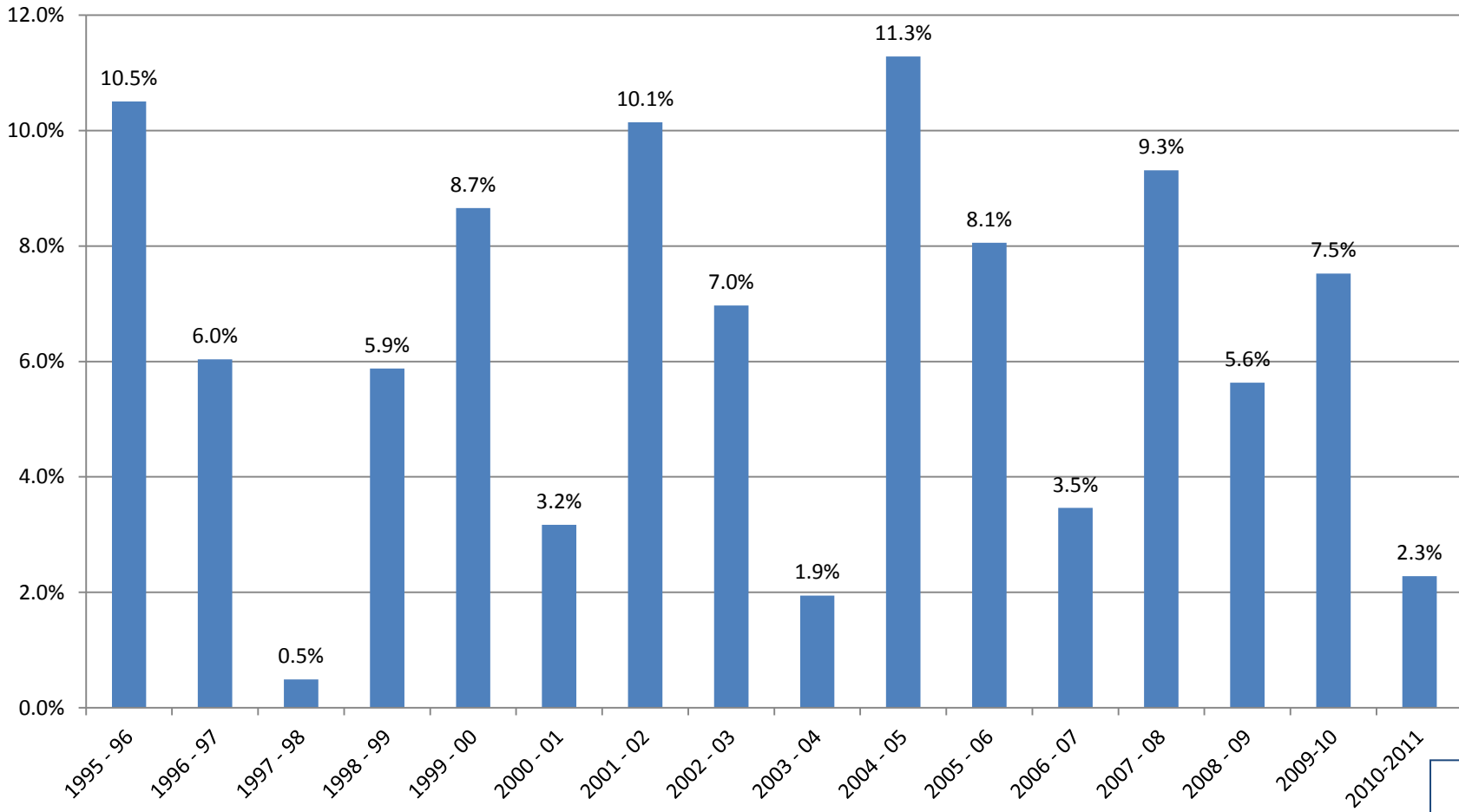
**Other includes special schools, international schools, indigenous schools, and community schools.

Increase in students with disabilities in independent schools 1995 - 2011



Source: DEEWR Non-government school census data
Excludes independent Catholic enrolments

Increase in indigenous students in independent schools 1995 - 2011



Source: ABS *Schools Australia*
Excludes independent Catholic enrolments

FTE student and staff change 2001 - 2011

Sector	Students	Teachers	Non-Teaching
Independent	34.7%	42.8%	76.5%
Catholic	11.6%	18.7%	53.9%
Government	1.9%	8.4%	37.2%

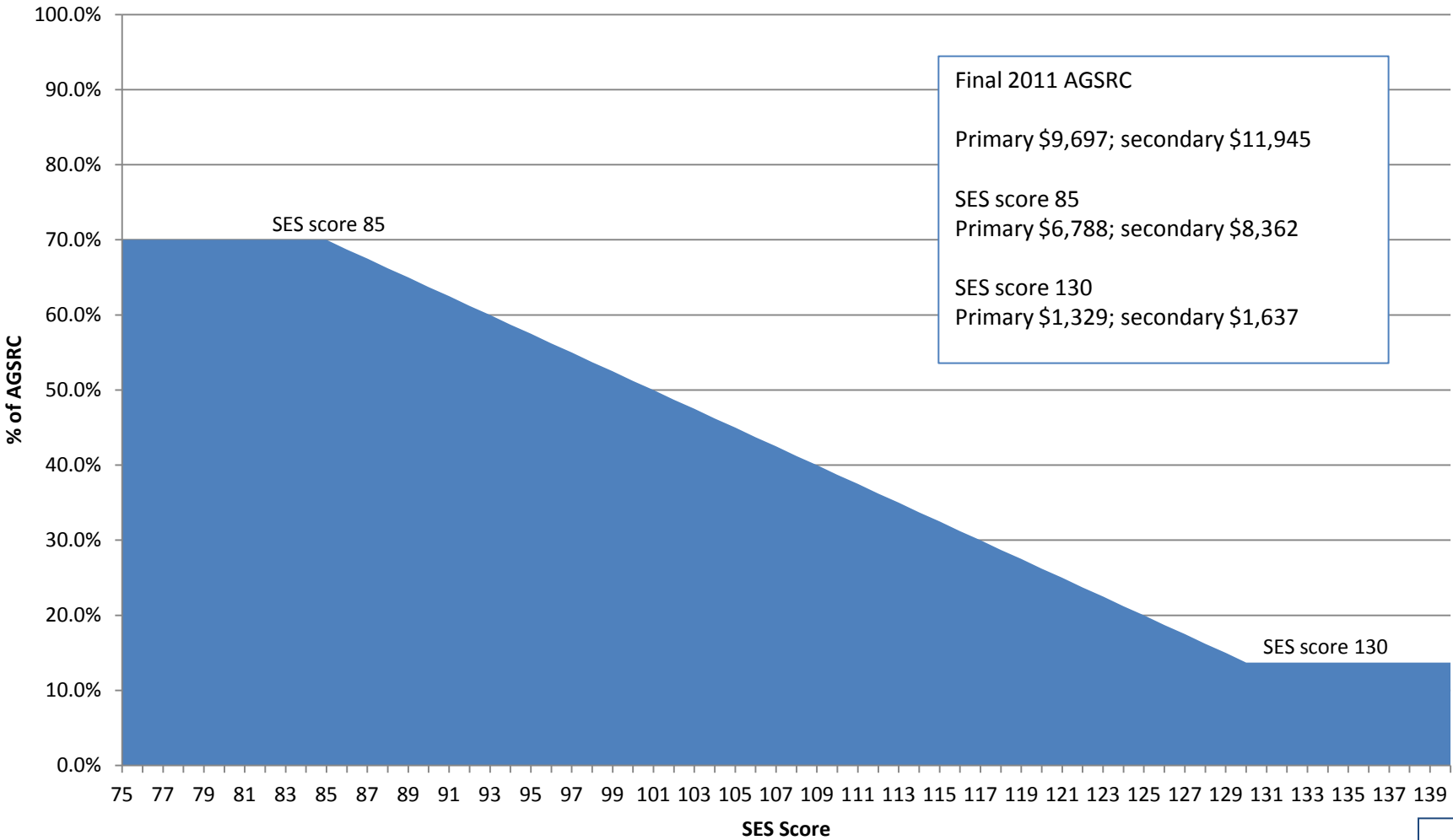
Source: ABS *Schools Australia*

Student/Teacher Ratios 1973 to 2011

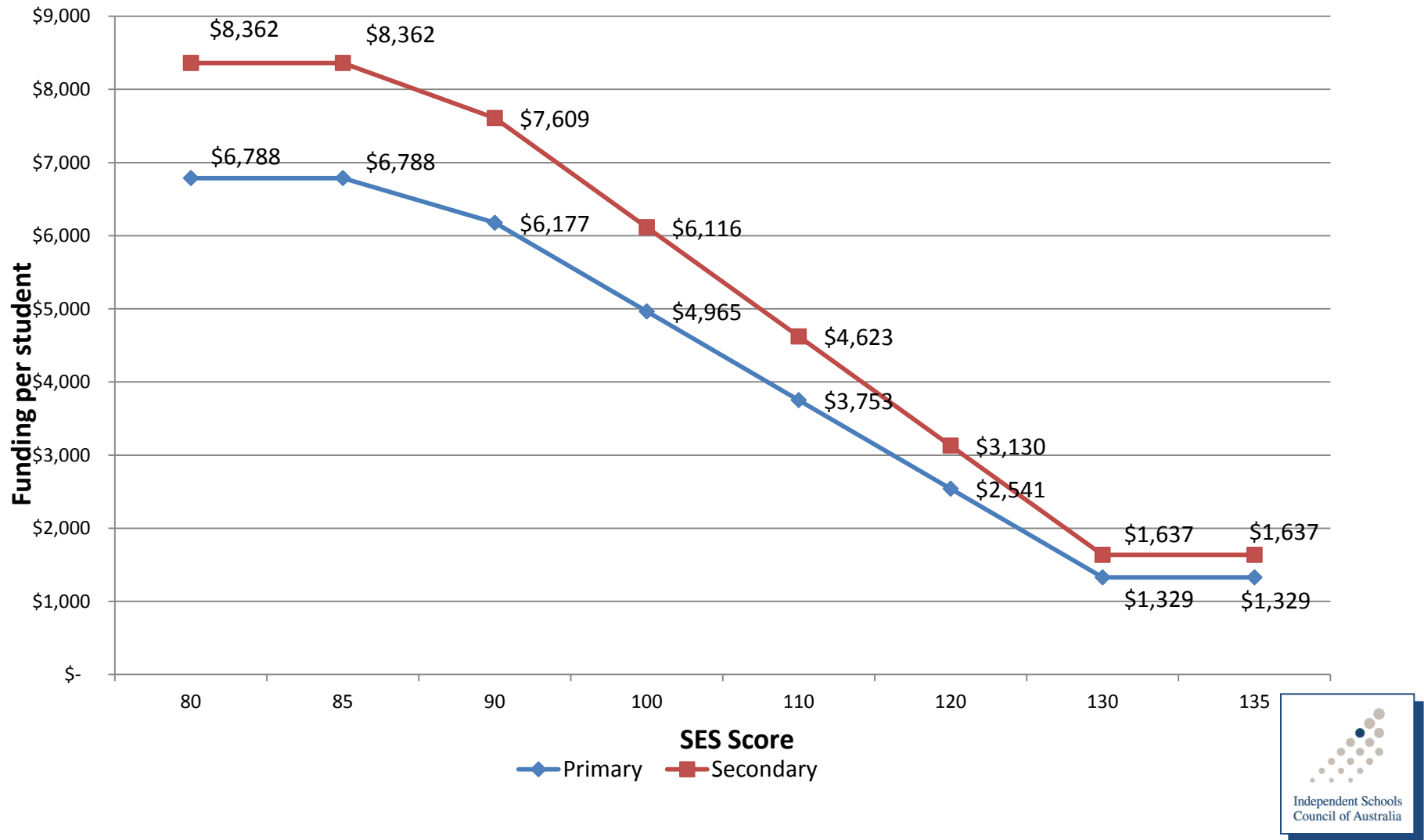
Year	Government		Non-Government			
			Catholic		Independent	
	Primary	Secondary	Primary	Secondary	Primary	Secondary
1973	25.1	16.2	29.6	22.2	17.1	14.2
1980	20.2	12.2	23.9	16.6	17.3	13.3
1990	17.9	12.0	21.1	14.0	16.9	12.2
2000	17.1	12.6	19.1	13.4	15.7	11.4
2011	15.3	12.2	17.5	12.8	14.8	10.4

Source: ABS Schools Australia

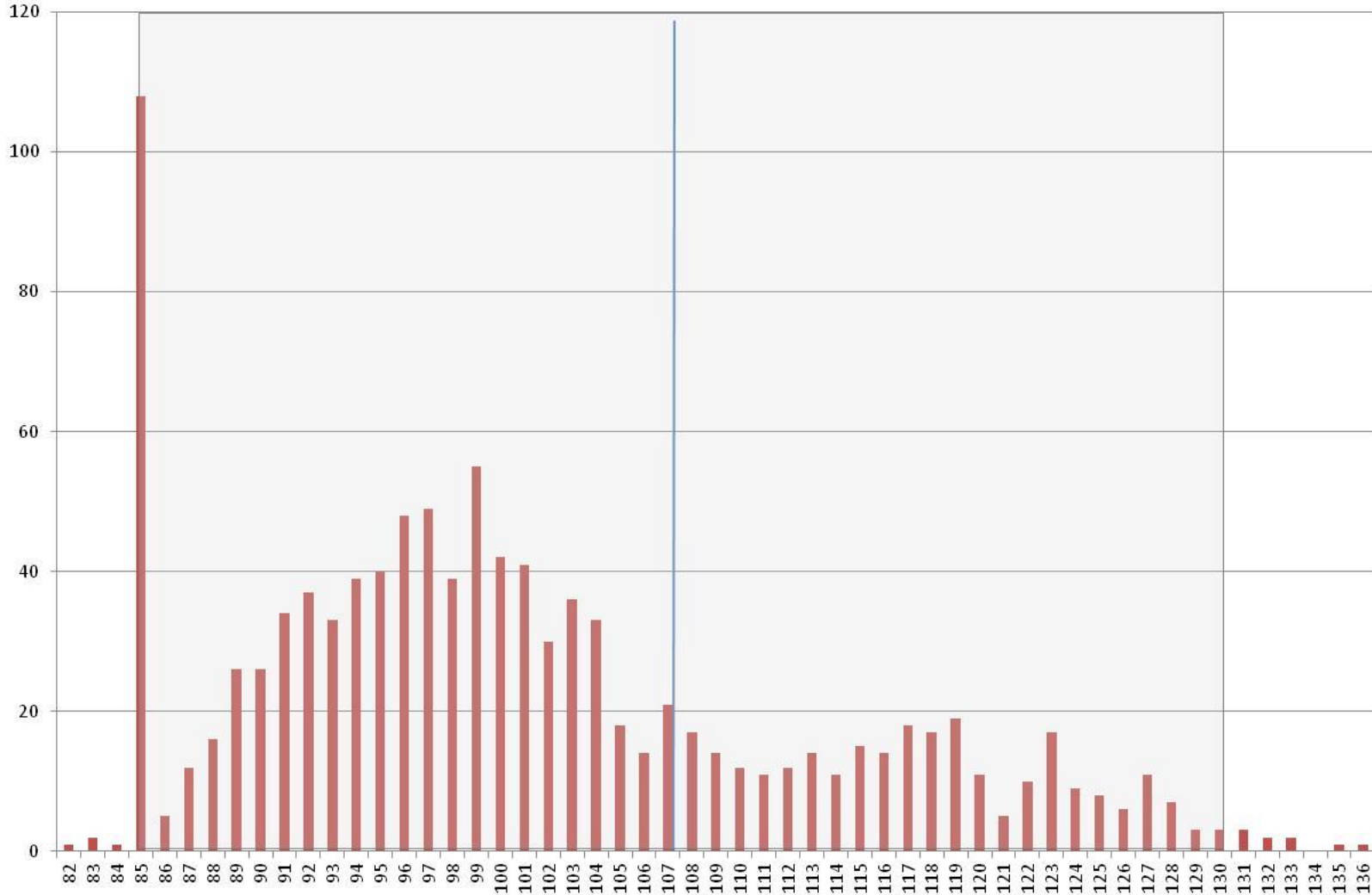
The SES funding model



Sliding scale of funding entitlement per student according to SES score (2011 final amounts)



Independent schools by SES score 2011



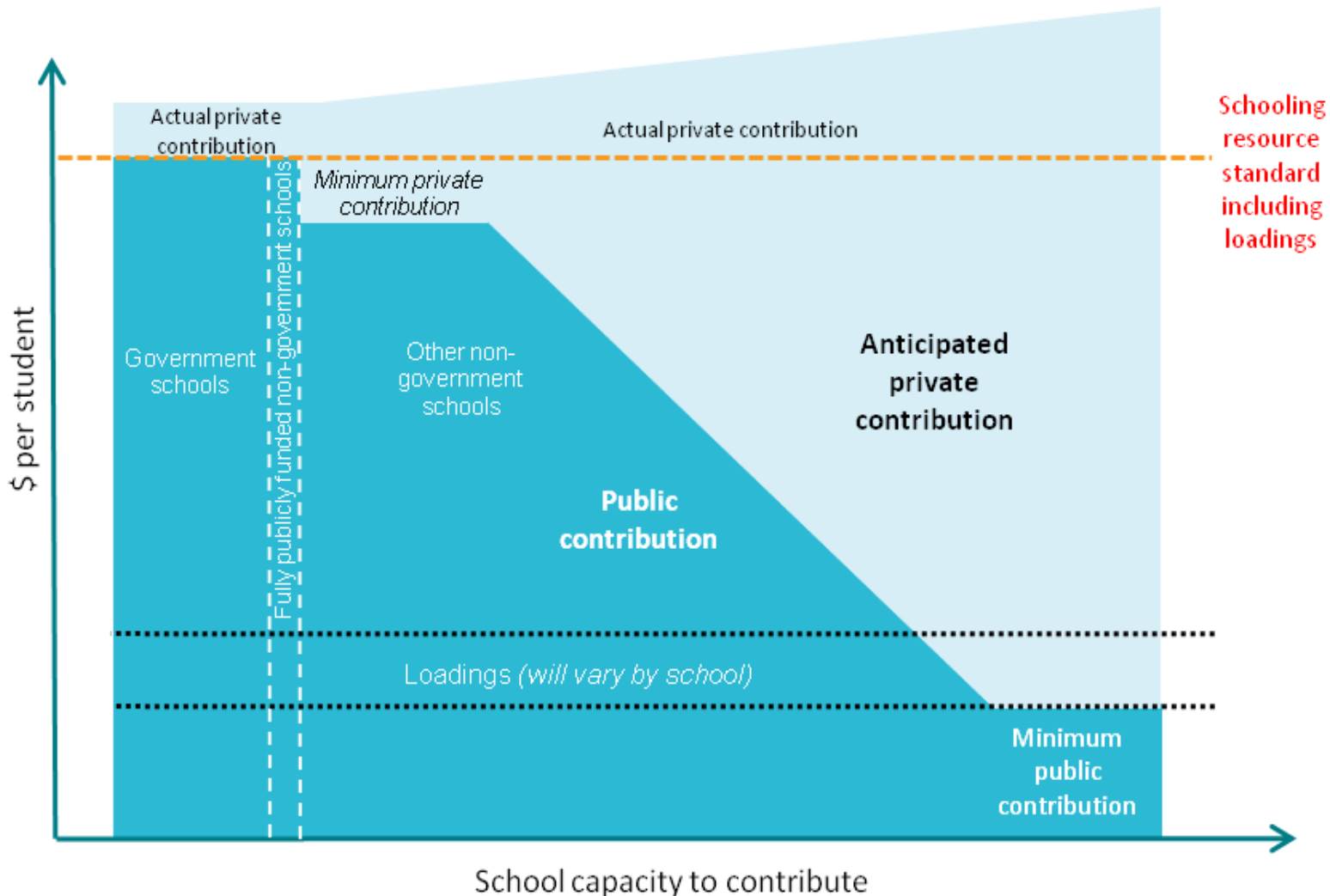
75% of schools have an SES ≤ 107

Note: SES 85 includes special schools, special assistance schools and majority indigenous student schools

AGSRC Index supplementation 2000 to 2011

	Primary AGSRC	Secondary AGSRC
2000	8.2%	5.2%
2001	6.4%	7.2%
2002	5.2%	5.2%
2003	7.1%	7.4%
2004	8.7%	7.2%
2005	3.1%	4.6%
2006	6.3%	3.6%
2007	5.5%	4.3%
2008	5.6%	3.5%
2009	4.2%	5.8%
2010	8.2%	7.0%
2011	6.9%	4.8%
Average	6.1%	5.5%

Proposed model for funding the SRS



SRS loadings – indicative ranges

	From (lower end of range)	to (upper end of range)
School size and location	10% <i>for medium-sized schools in remote locations</i>	100% <i>for very small schools in very remote locations</i>
Low socioeconomic status	10% <i>for each low SES student in schools with under 10% of students in the lowest SES quarter</i>	50% <i>for each low SES student in schools with more than 75% of students in the lowest SES quarter</i>
Indigeneity	40% <i>for each Indigenous student in schools with between 5% and 25% of students who are Indigenous</i>	100% <i>for each Indigenous student in schools with more than 75% of students who are Indigenous</i>
Limited English language proficiency	15% <i>for each student with limited English proficiency</i>	25% <i>for each student with limited English proficiency (for example, recently arrived refugees)</i>

Note: The loadings for SWD to be determined after nationally consistent definitions and data become available

Impact of SRS – independent sector 2010 Data

	NSW	VIC	QLD	SA	WA	TAS	NT	ACT	AUST	Diff 2009-2010
Winners										
No.	262	195	155	88	98	28	16	3	845	-34
\$ million	\$125.6	\$154.7	\$122.4	\$54.8	\$39.6	\$11.3	\$13.6	\$0.6	\$522.5	-\$78.3
Losers										
No.	103	14	20	9	46	0	5	13	210	35
\$ million	-\$70.7	-\$5.1	-\$9.9	-\$2.2	-\$22.6	\$0.0	-\$2.7	-\$22.9	-\$136.2	-\$4.8

Impact of SRS - SRS Model and 'Transition' 2010 Data

	NSW	VIC	QLD	SA	WA	TAS	NT	ACT	AUST	Diff 2009-2010
FM to SRS model	20	18	12	11	3	1	8	0	73	-10
SES to SRS model	242	177	143	77	95	27	8	3	772	-24
FM to transition	61	7	10	6	11	0	4	12	111	11
SES to transition	42	7	10	3	35	0	1	1	99	24

Independent sector key messages

Summary

1. No loss of funding in real terms x
2. Direct relationship between Commonwealth and the non-government sector ✓
3. Legislated funding quadrennium or longer ✓
4. Accurate measure of the cost of educating a child in a government school ?
5. Annual indexation ✓
6. Increased and continuing capital and targeted funding x
7. Projected enrolment growth and partnership with governments ?
8. Funding must be based on robust data x
9. Consistent application of funding model ?